

BCF 2016-17 Mid Year Review

Performance and priorities

Health and Well Being Board

15th December 2016

James Roach



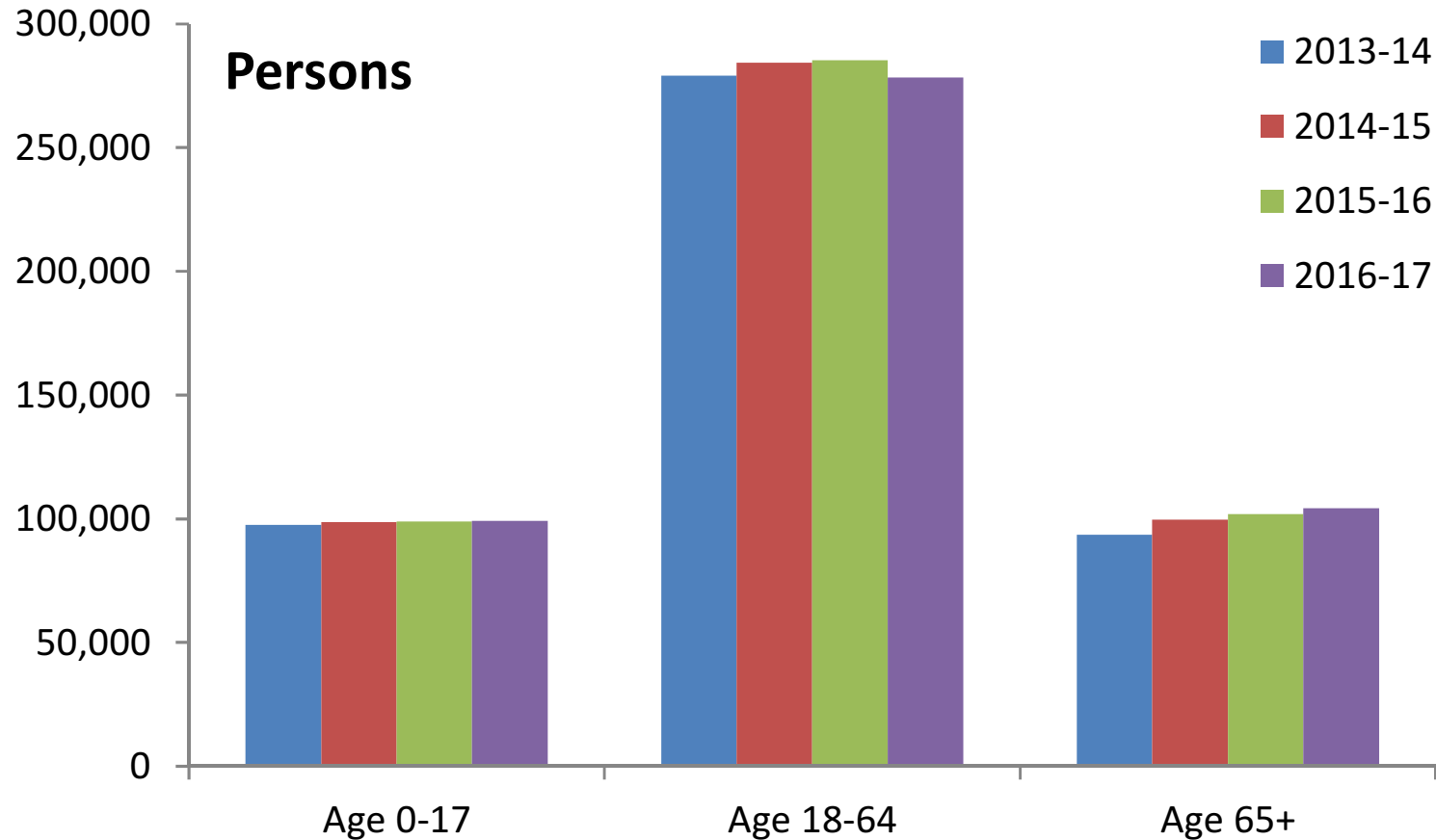
Introduction

- To understand the impact of BCP in the key areas of admission avoidance and system flow.
- To support planning for 2017-18 in terms of scheme delivery and priorities
- To advise Health and Well Being Board on the construct of the BCP for 2017/18 , funding envelope and approval process .

Areas Covered

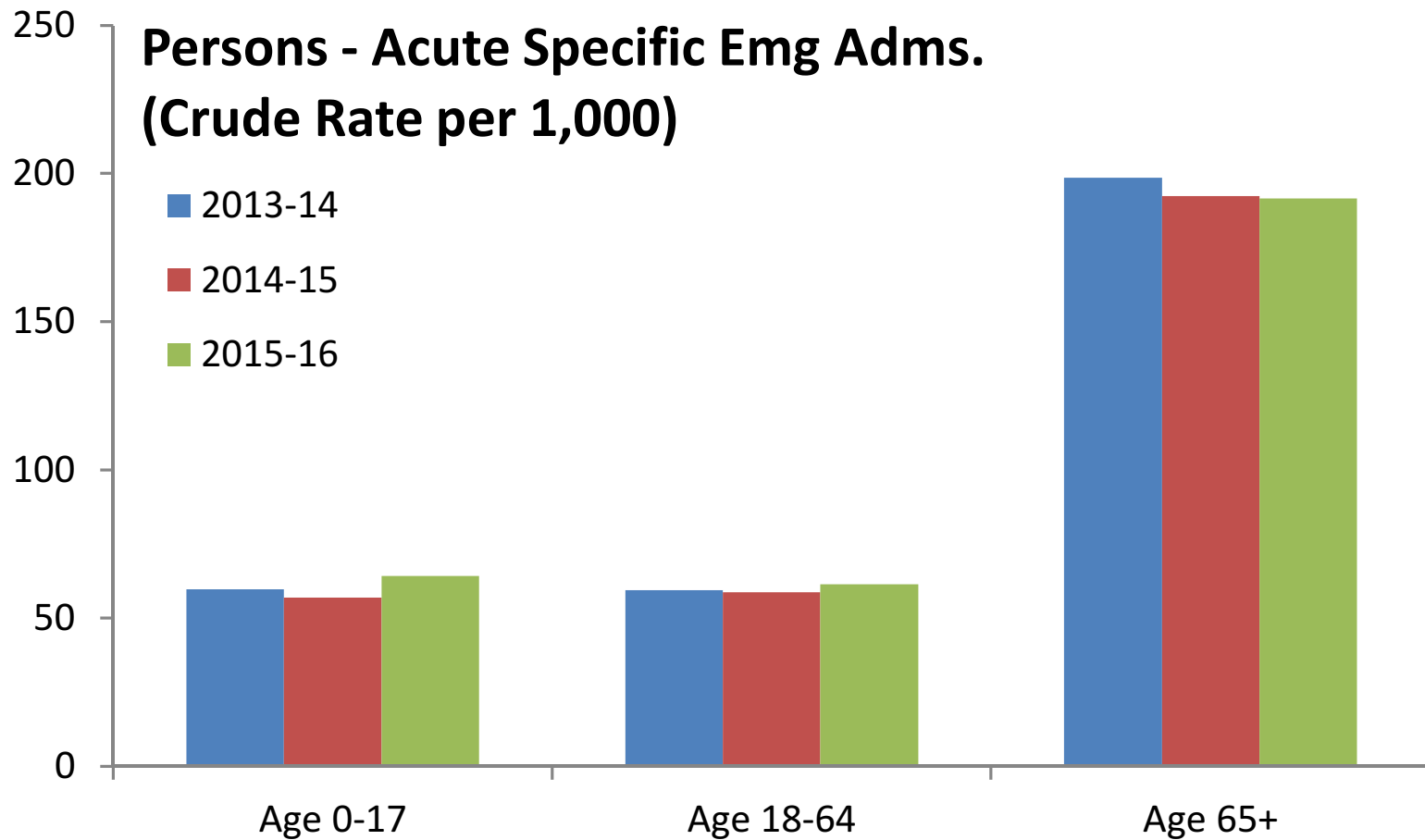
- Population change.
- Secondary Care Activity
 - Acute Specific Non Elective Admissions
 - Avoidable Emergency Admissions
- Delayed Transfers of Care
- Social Care Activity
- BCP Scheme Performance

Registered Population



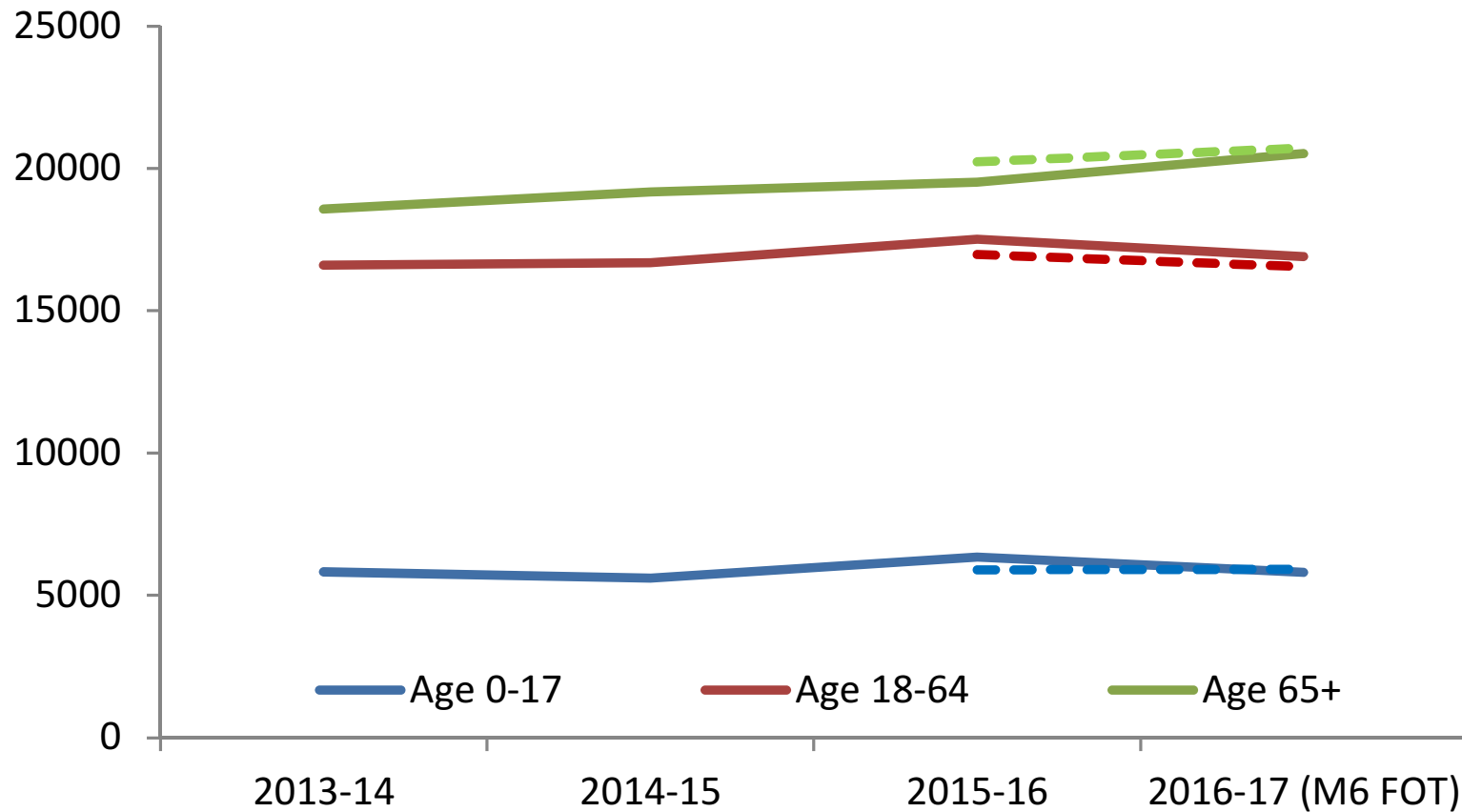
Source: NHS Digital, Registered Population Data

Rate of Acute Specific Emergency Admissions



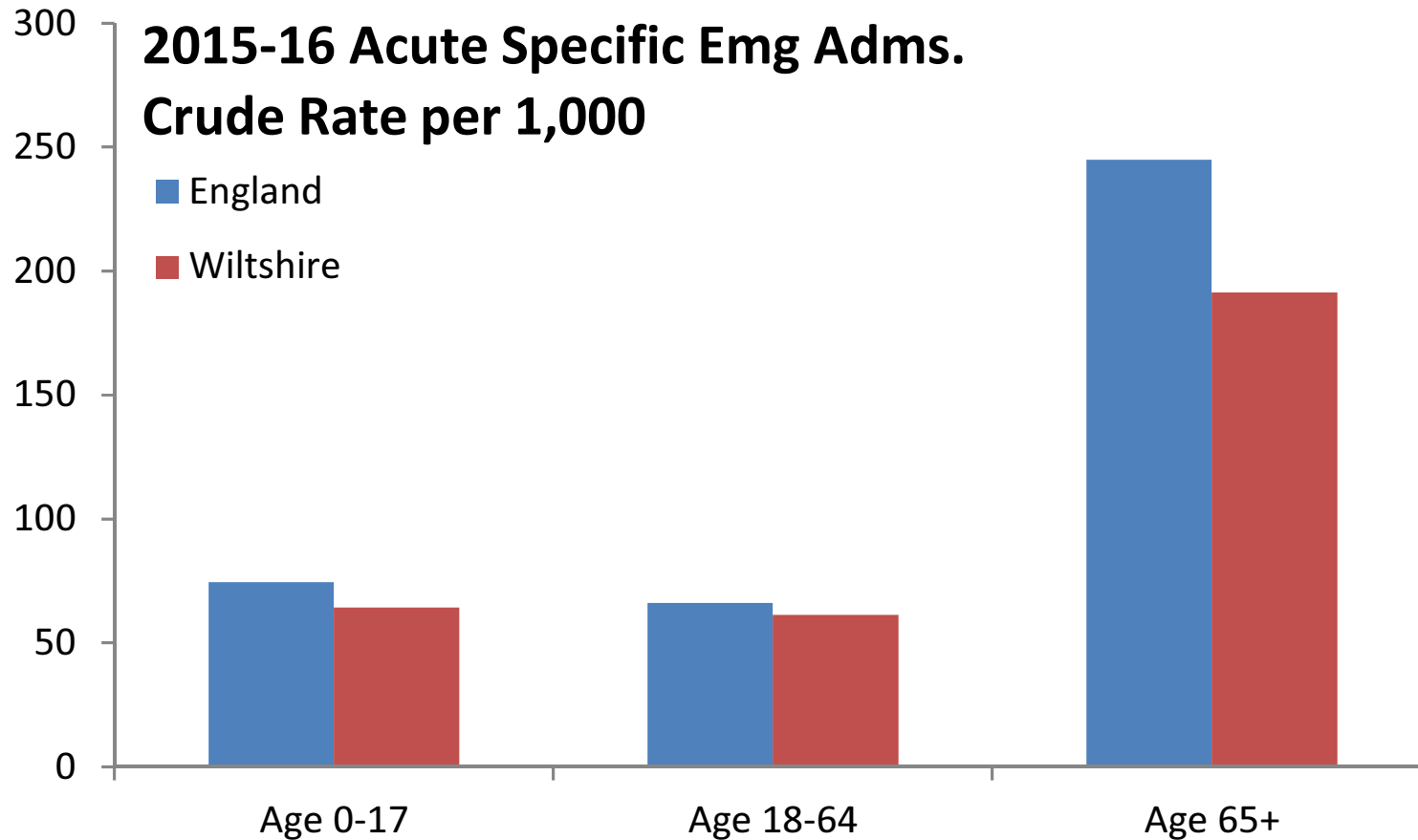
Source: Wiltshire Council Calculation, HES Data

Acute Specific Admissions - Wiltshire Impact



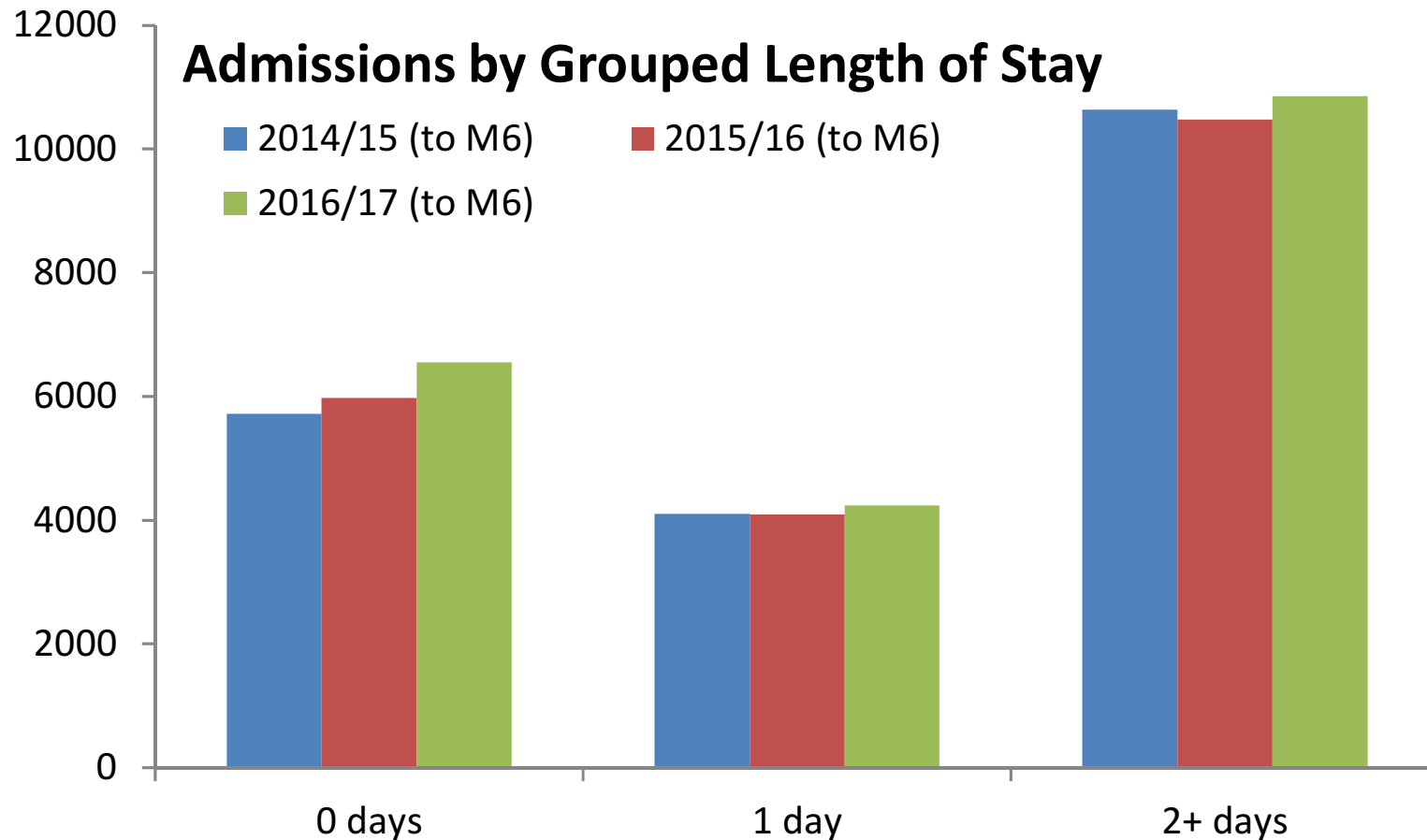
Source: Wiltshire Council Calculation, HES Data

Rate of Acute Specific Emergency Admissions



Source: Wiltshire Council Calculation, HES Data

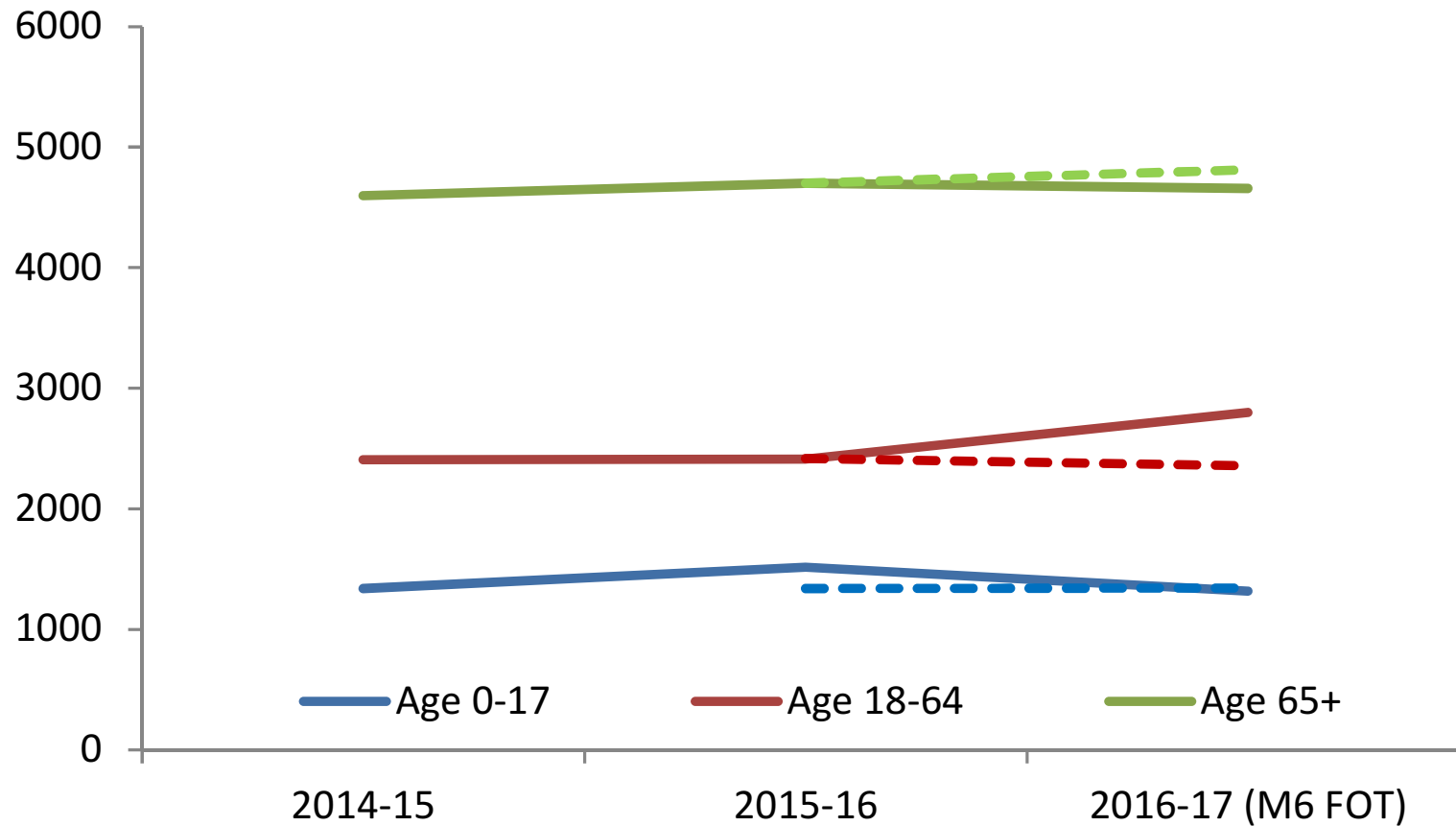
LoS Acute Specific Emergency Admissions



Source: SCW CSU Intelligence Point



Avoidable Emg. Admissions - Wiltshire Impact



Source: Wiltshire Council Calculation, CSU Data

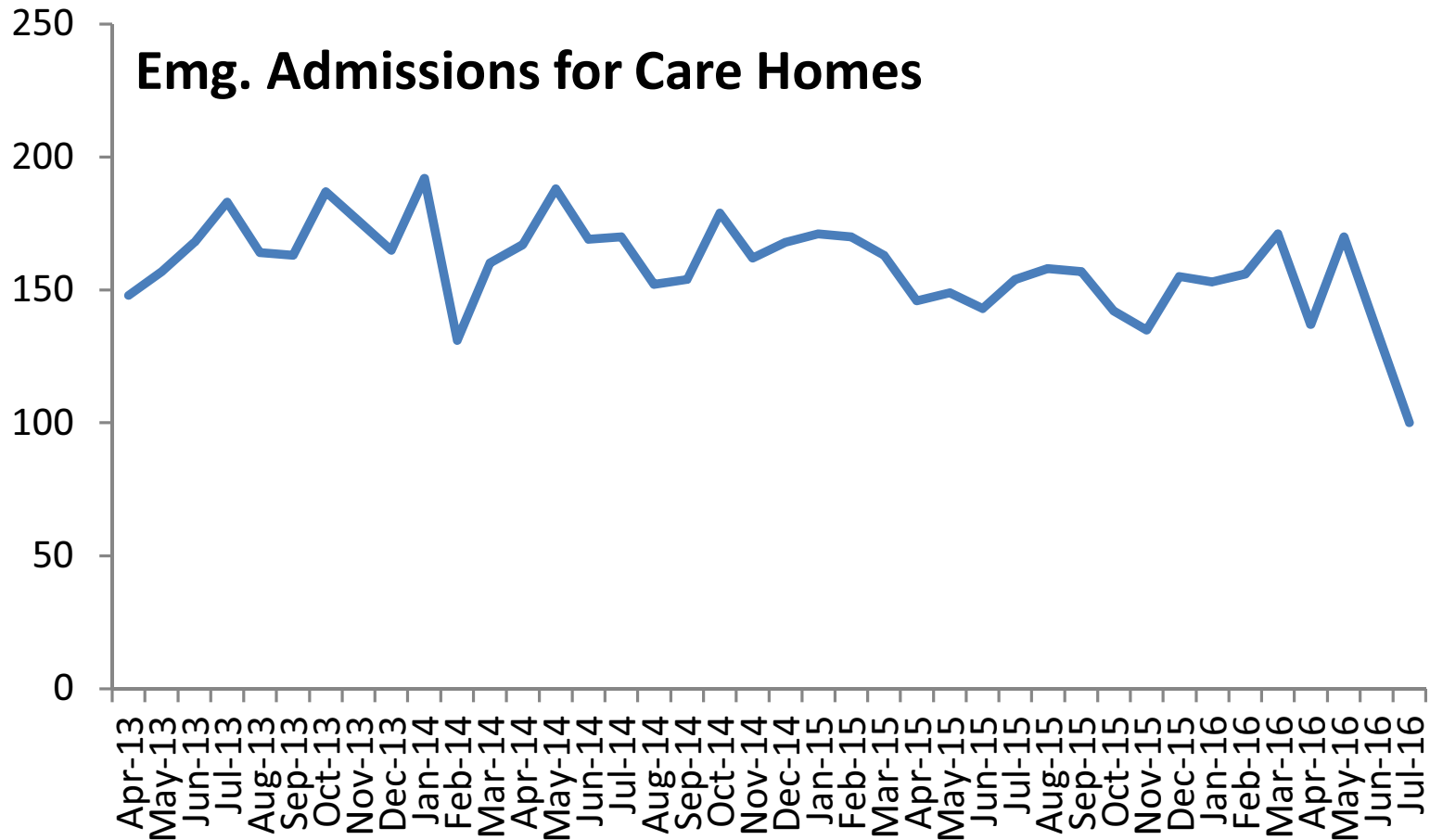


Age 65+ Activity by Provider and Commissioner

Hospital	CCG	2014-15	2015-16
GWH	Swindon	52.4%	53.0%
	Wiltshire	35.4%	34.8%
RUH	BANES	40.2%	41.8%
	Wiltshire	38.7%	37.1%
SFT	Wiltshire	77.3%	74.4%
	Dorset	11.8%	13.2%

Source: Wiltshire Council Calculation, Dr Foster

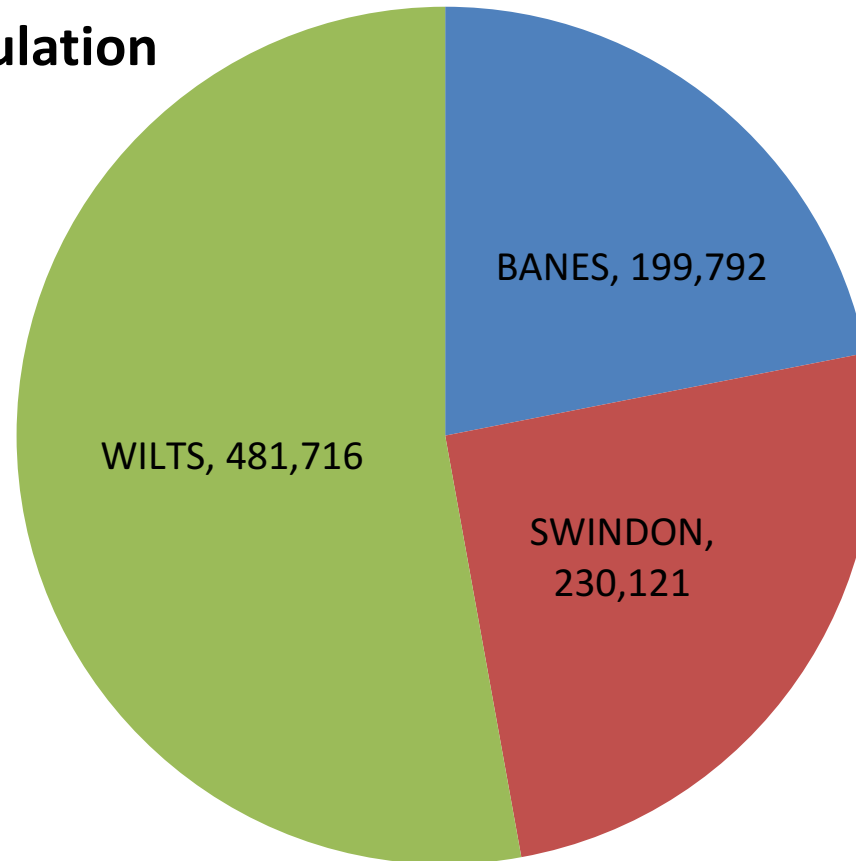
Emergency Admissions from Care Homes



Source: SCW CSU

BSW Registered Population

BSW Registered Population Oct 2016

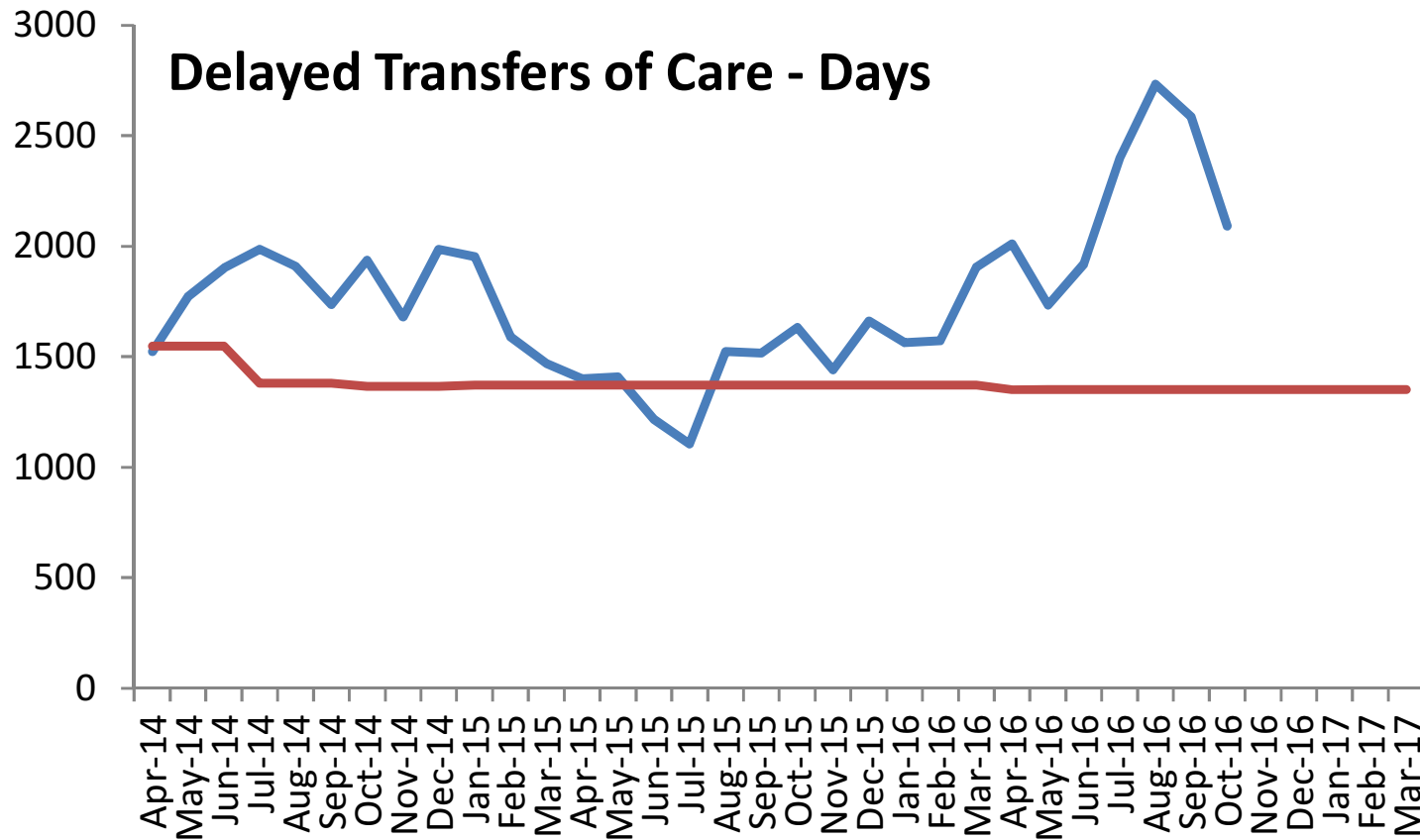


Source: NHS Digital, Oct 2016 Registered Population Data

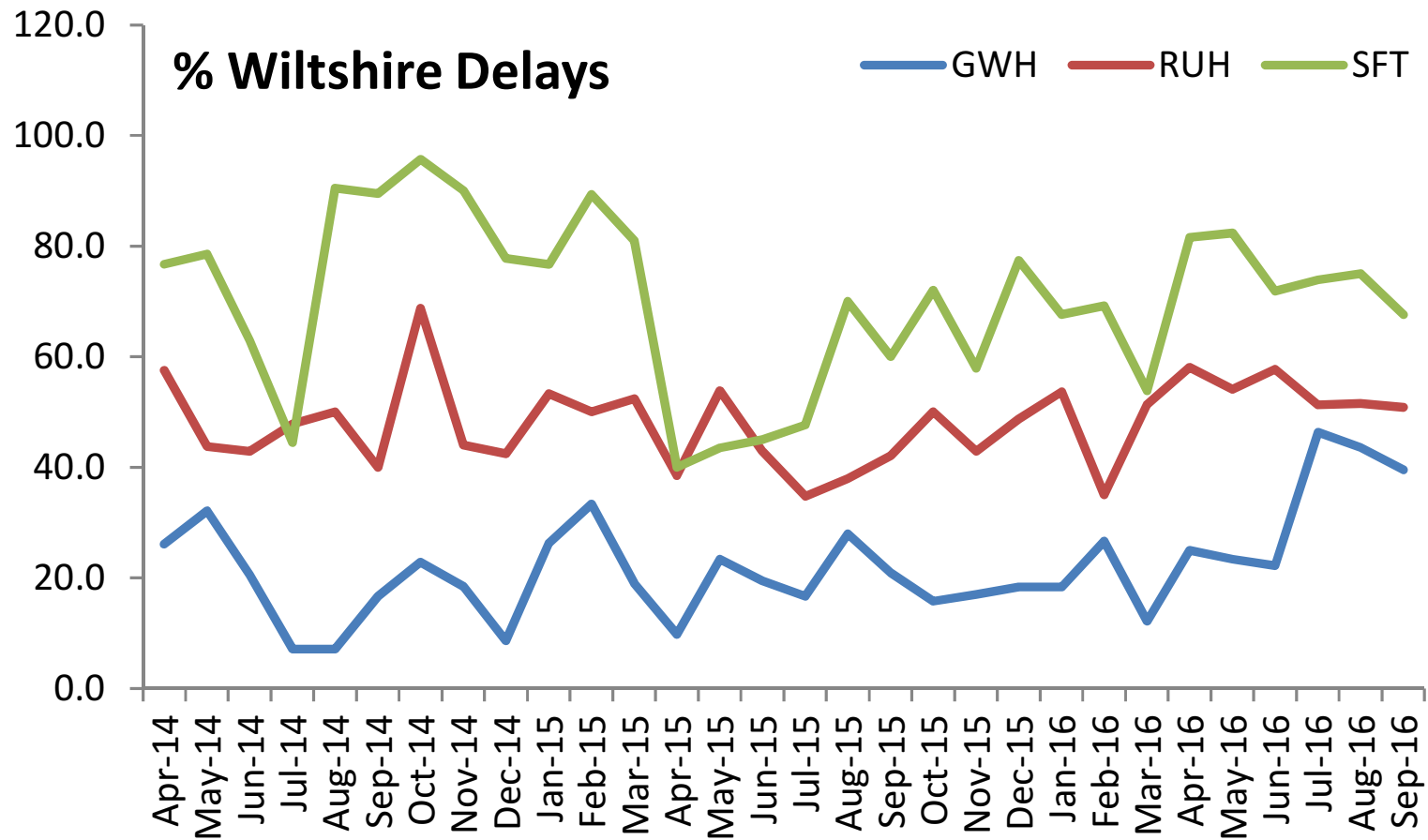
Secondary Care Activity Summary

- There has been absolute growth in A&E attendance and admissions to hospital.
- Anecdotally backed up to some extent by the data there is increasing acuity in patients.
- Growth in activity from older people is generally lower than the population growth.
- Further work on admission avoidance and medically fit discharge is ongoing.

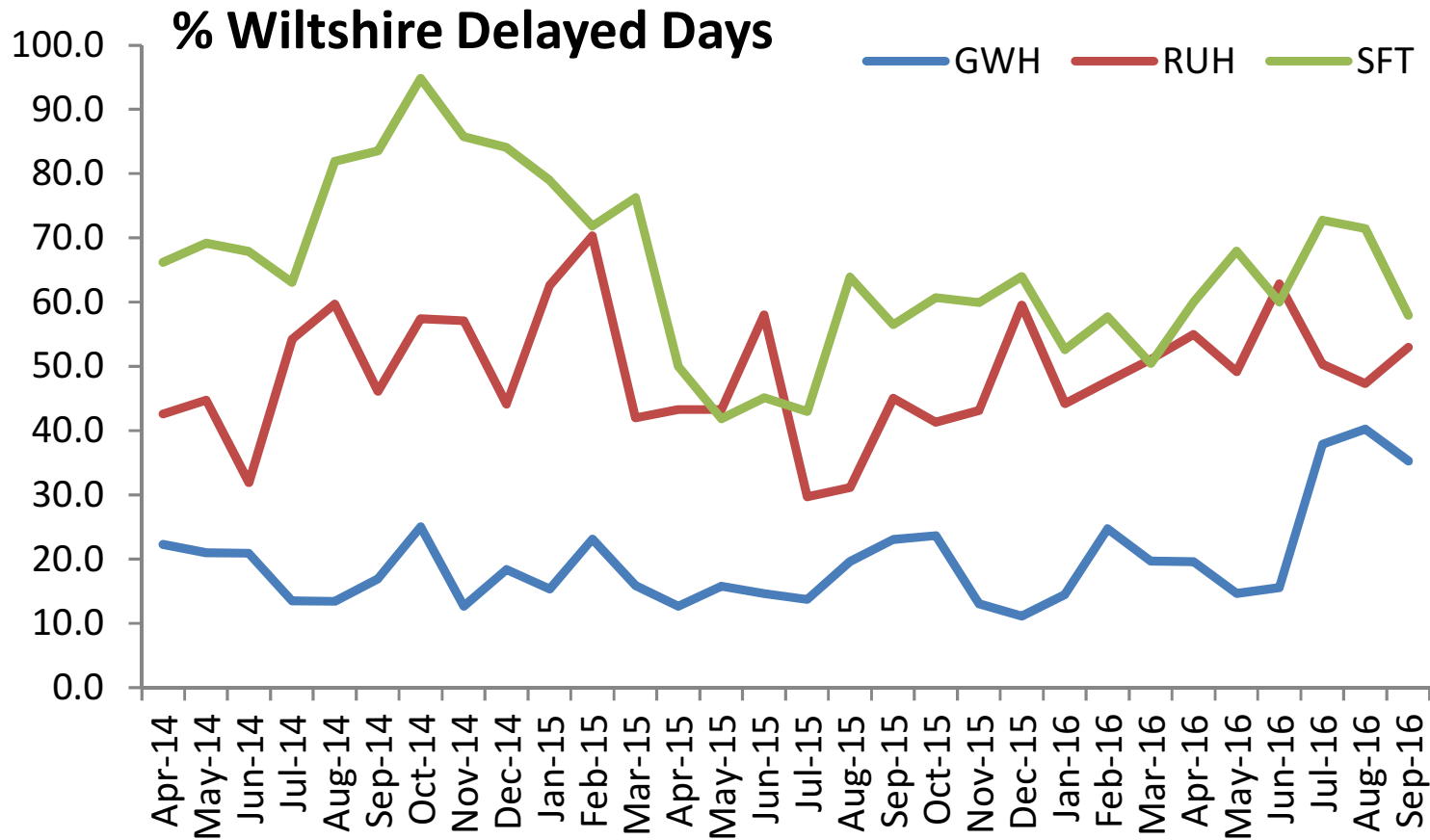
Trend in Delayed Transfers of Care – Days



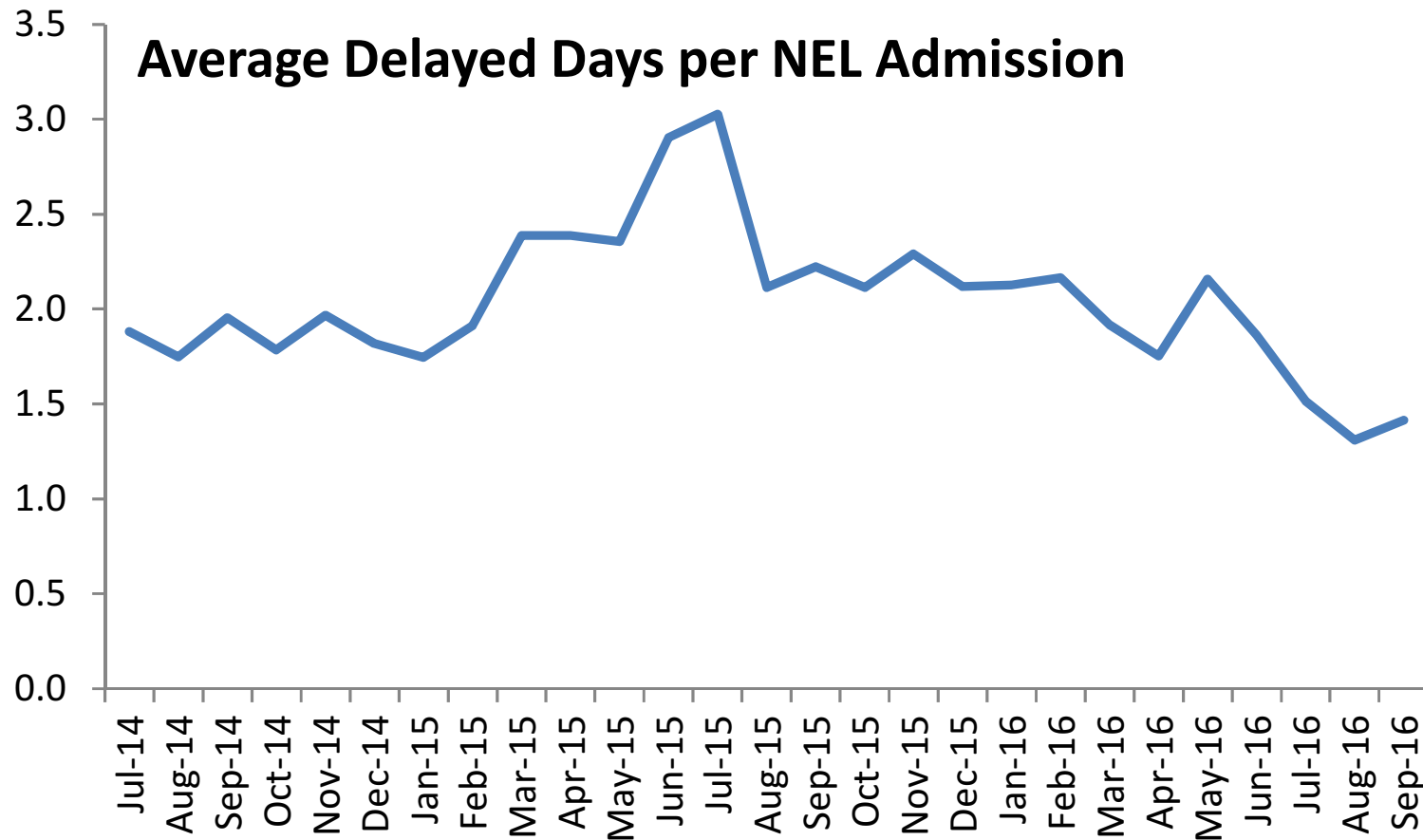
Delayed Transfers of Care



Delayed Transfers of Care



Delayed Transfers of Care

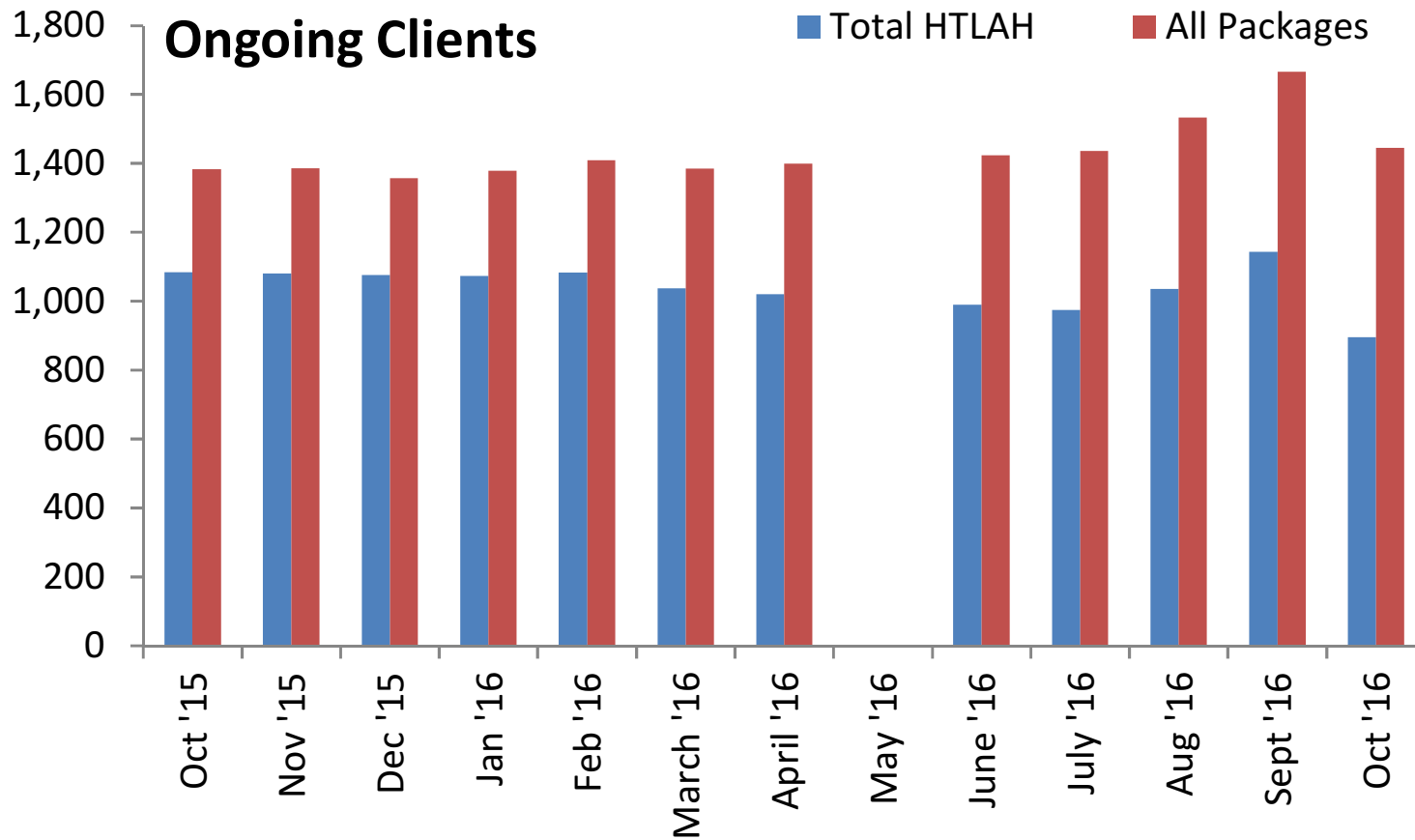


Delayed Transfers of Care Summary

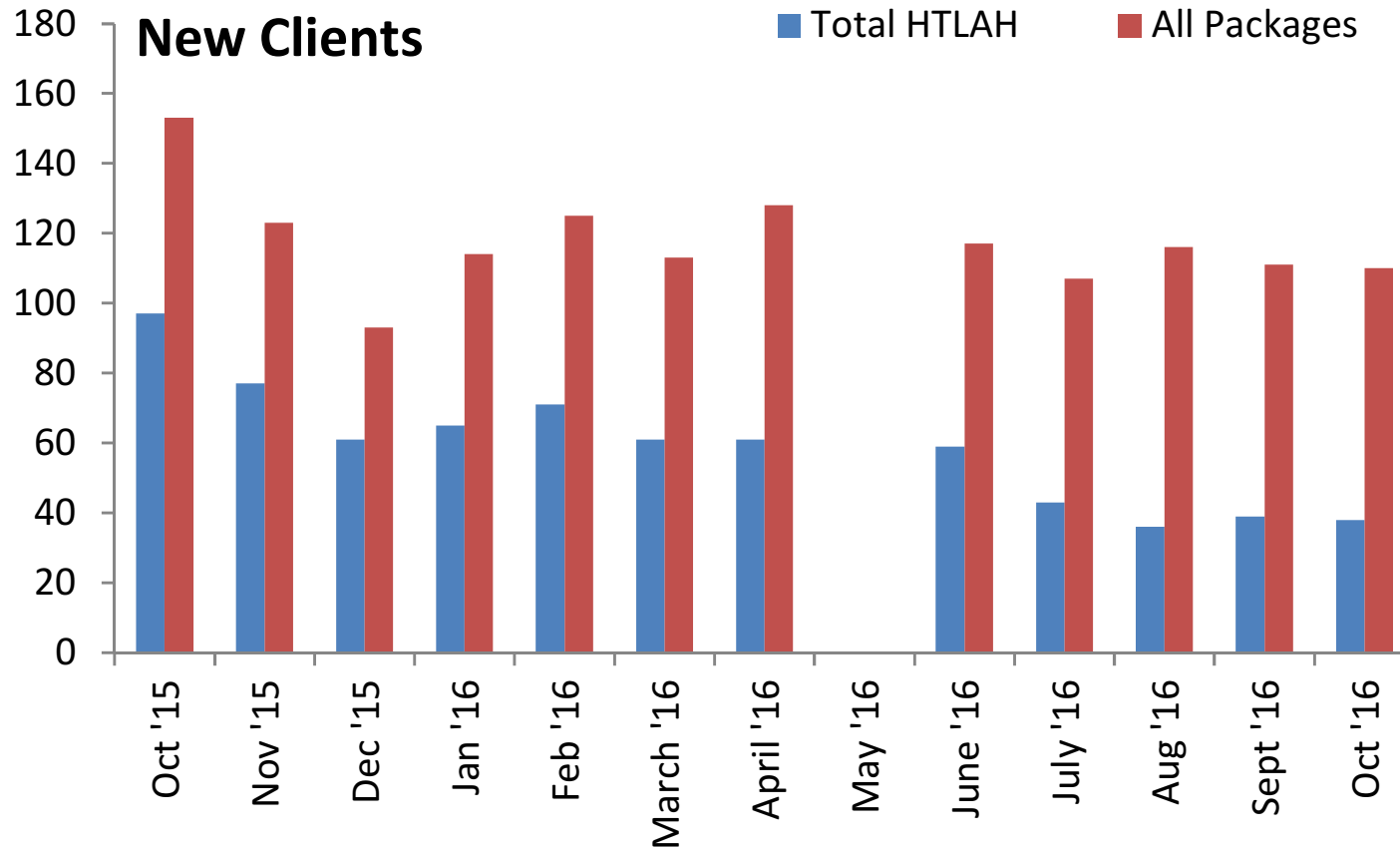
- Delays reduced following the investment made by DCLG in late 2014, early 2015.
- This was initially sustained but increasing demand from an increasing population has



Ongoing Packages of Care

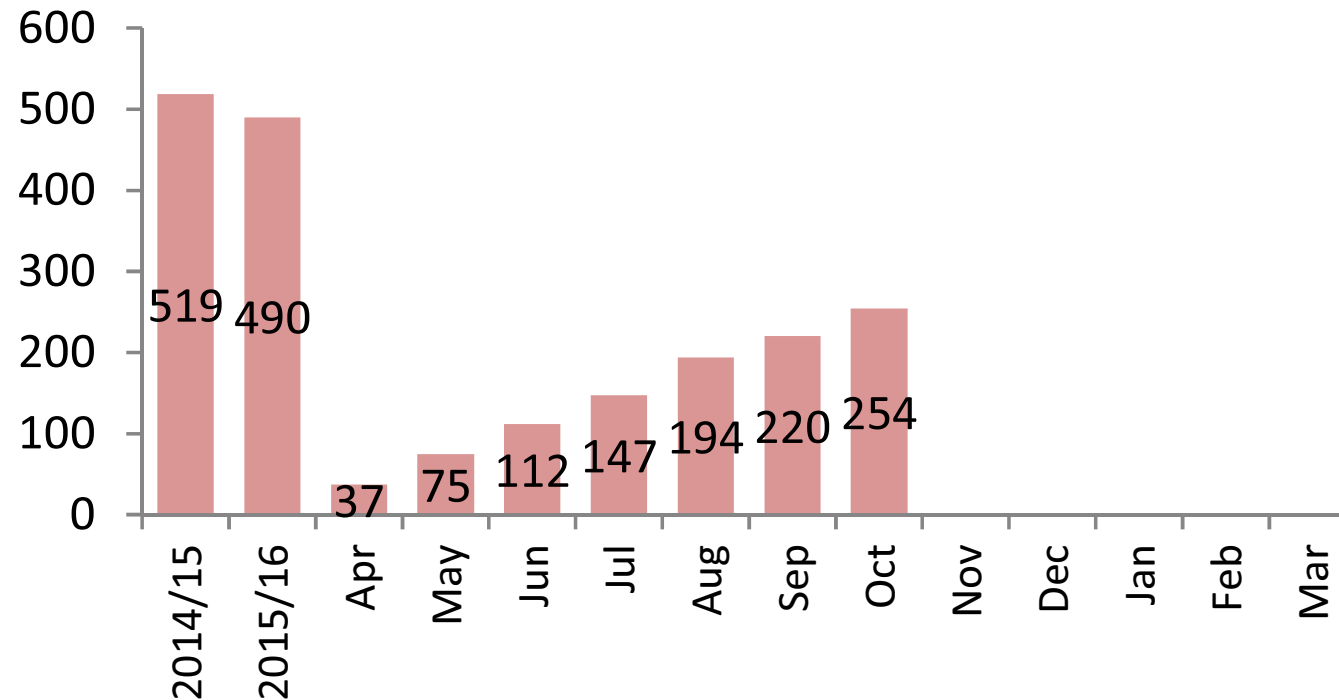


New Packages of Care

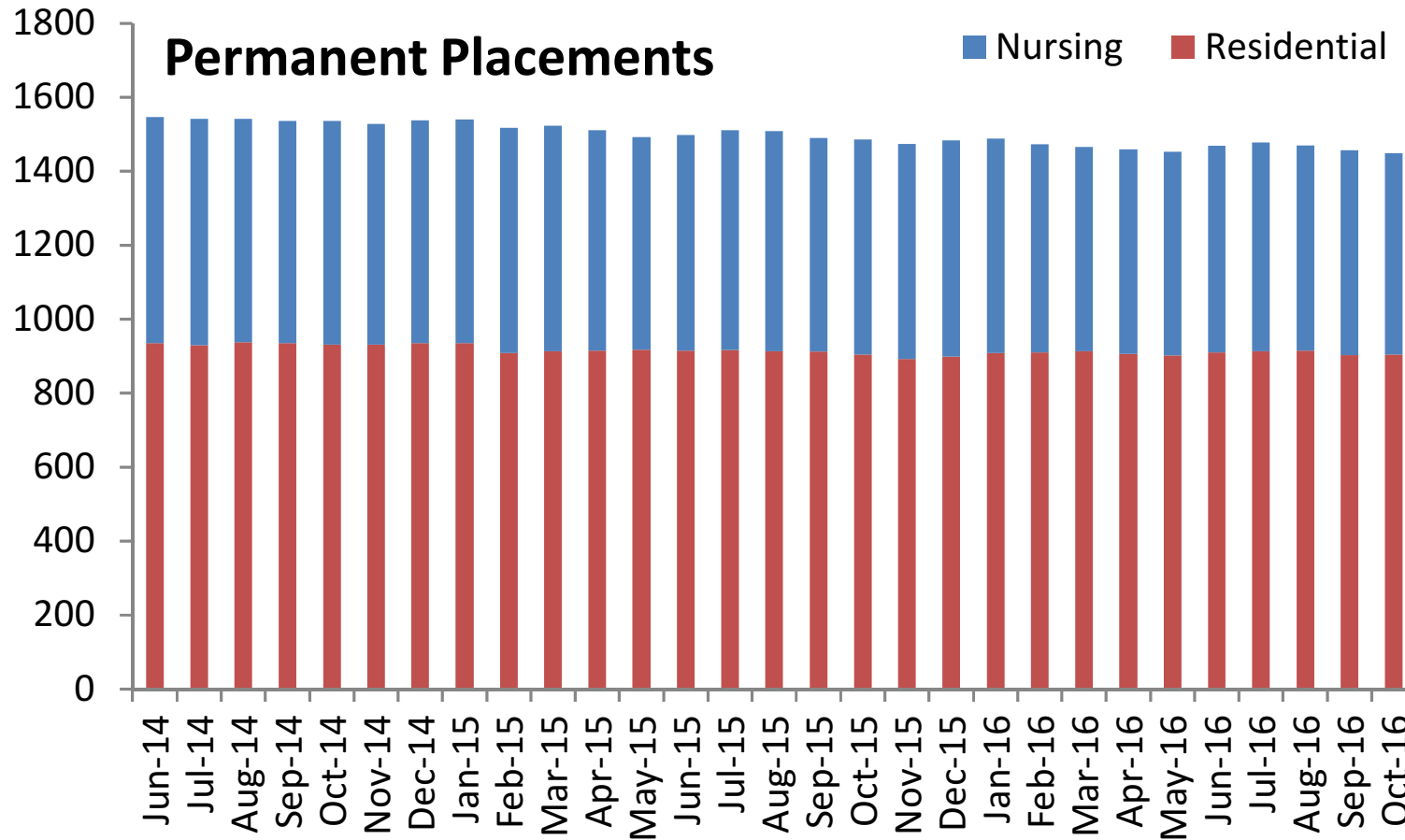


Trend in permanent admissions to Care Homes

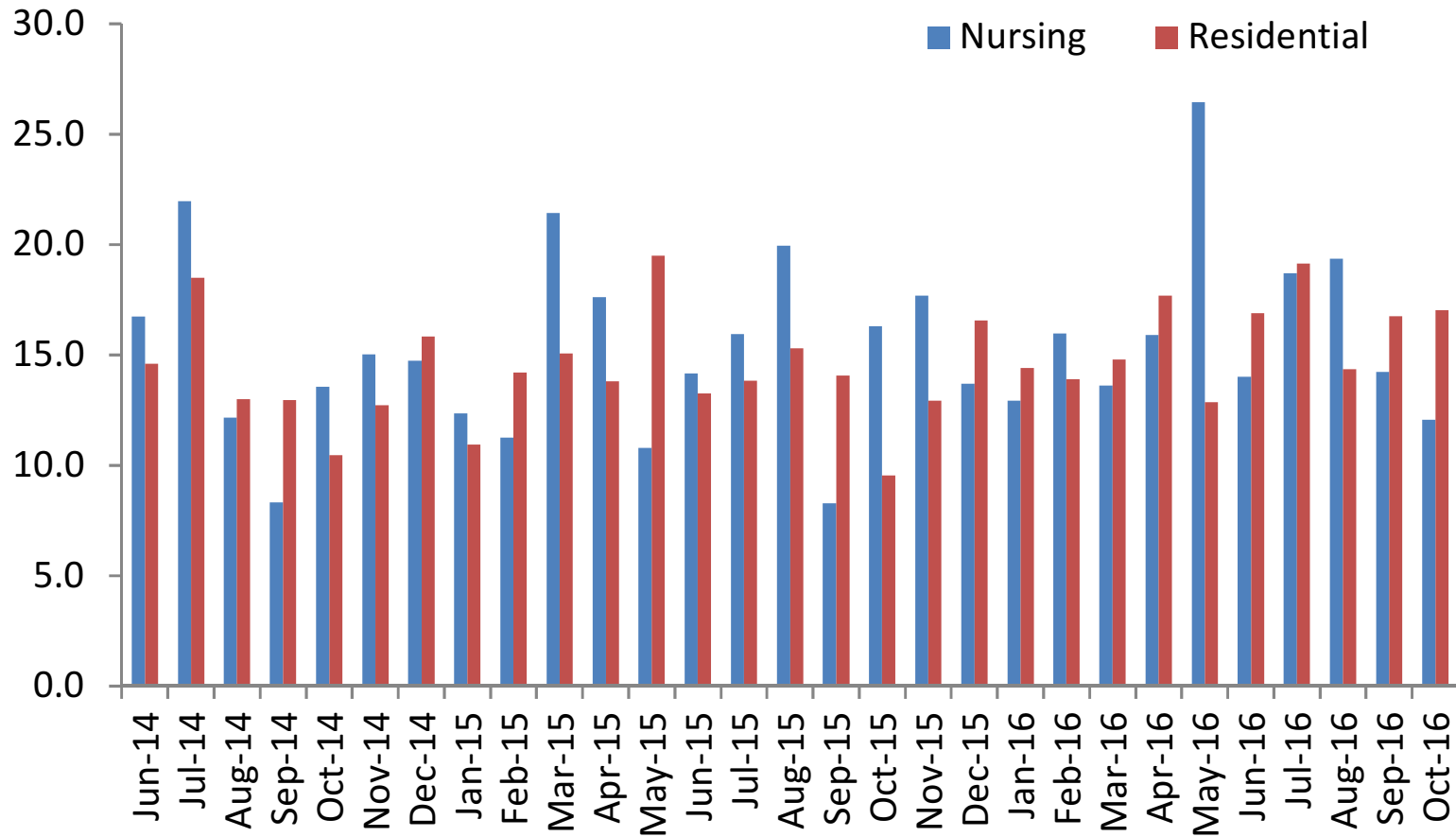
65+ New Permanent Placements



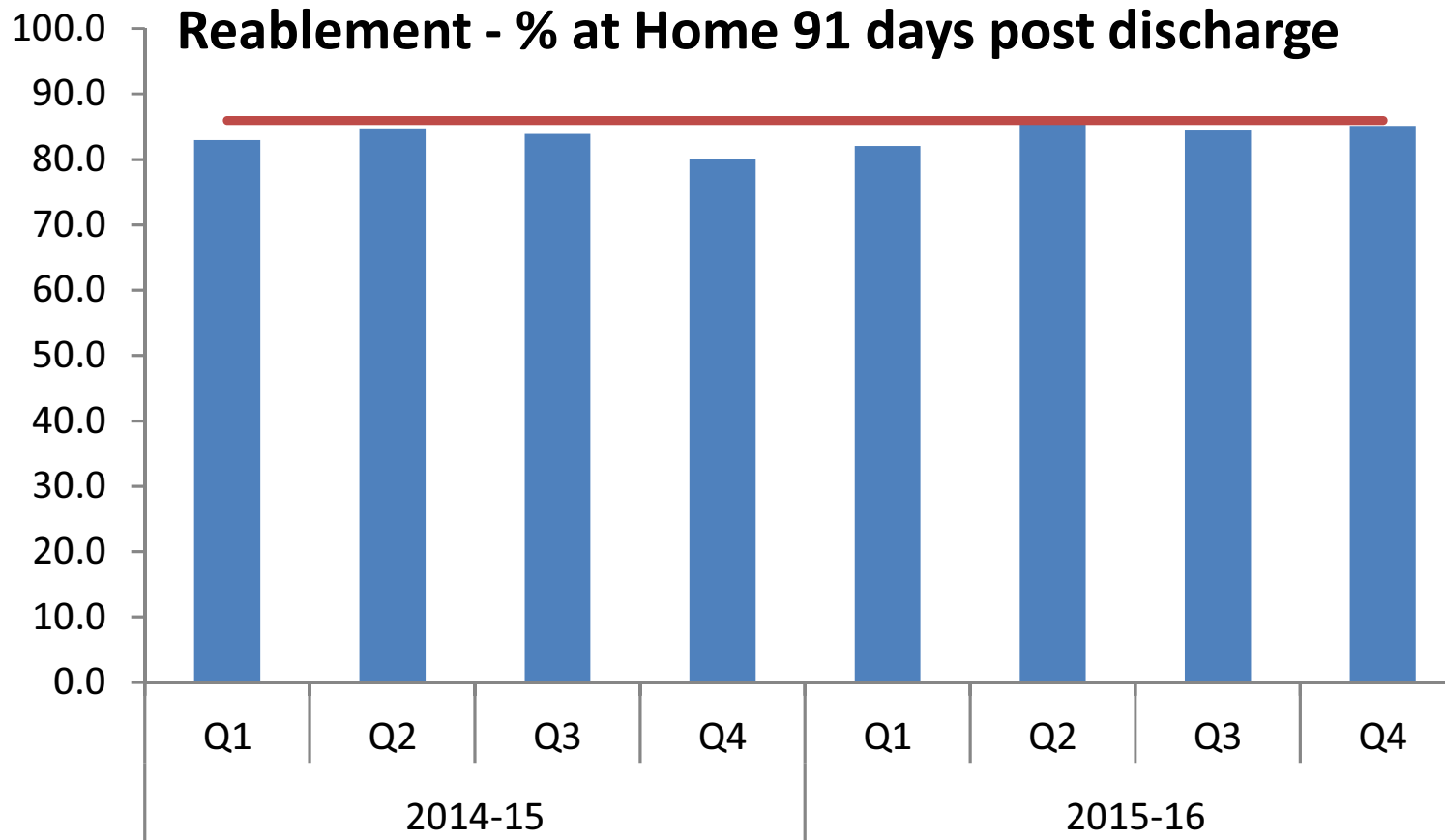
Trend in total number of permanent placements



Length of Stay in Permanent Placement



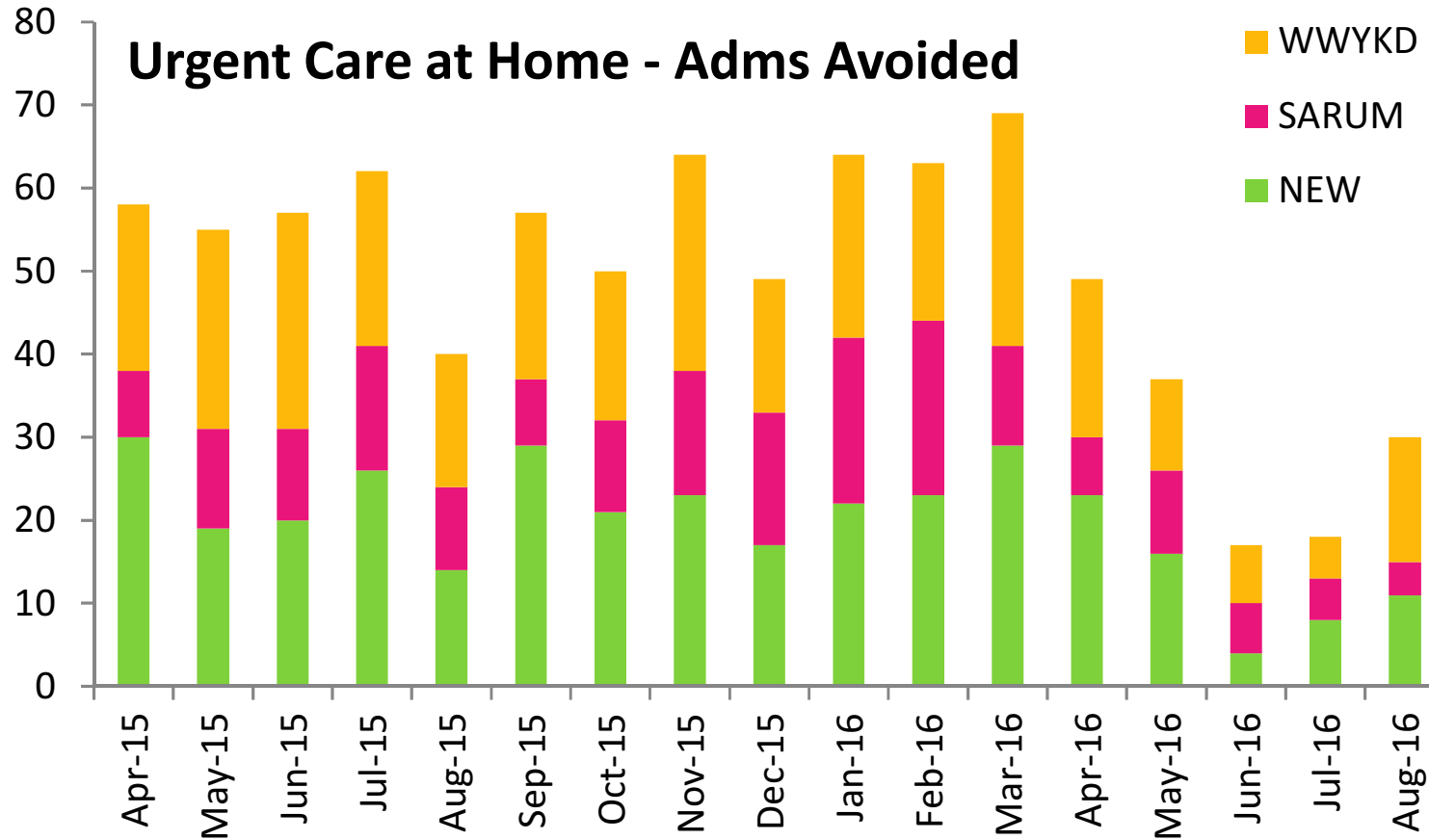
Trend in reablement 91 days post discharge from hospital



Social Care Summary

- Council arranged care at home remains steady, but this has been achieved by increased spot purchase.
- There is a need to better understand HTLAH activity arranged by community teams.
- The size of care packages has increased and permanent admissions are falling marginally.
- People discharged are generally staying at home.
- Further work is ongoing to model future social care demand.

Urgent Care at Home



Better Care Fund Scheme Summary

- Urgent Care at Home shows evidenced admission avoidance.
- The CQC restriction shows the impact even small reductions in available workforce can have on the system.
- The utilisation of step up beds across Wiltshire has reduced, with consequent impact on admissions, delayed discharge and decompensation resulting in a greater care need.

Overall Summary

- The Better Care Fund has been measured on its ability to deliver reductions in activity.
- The Better Care Fund has invested in schemes which have supported the Wiltshire health and social care system with management of activity and flow through the economy.
- There remain structural problems with capacity and the Better Care Fund is supporting improvements in this area.

Next Steps

- 2017-18 investments decisions.
- Working with the STP.
- Further work on admissions avoidance will help the sustainability of the system.
- Modelling demand in Social Care System post discharge to support further improvements in social care capacity